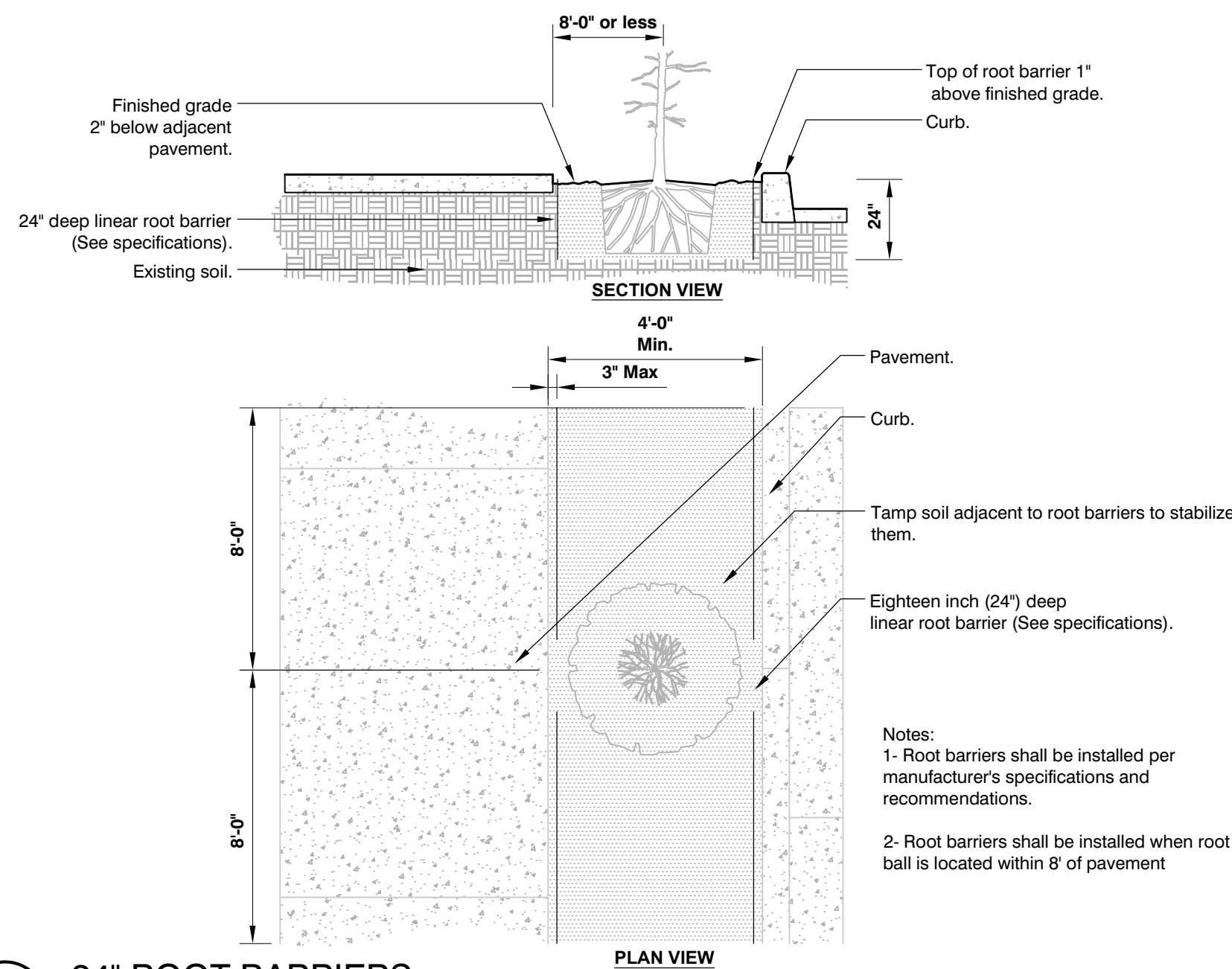




888 s andrews avenue, suite 300  
Fort Lauderdale FL. 33316  
office: 954.224.0432  
LA# 6666983

DESIGNED DRAWN CHECKED



2 24" ROOT BARRIERS

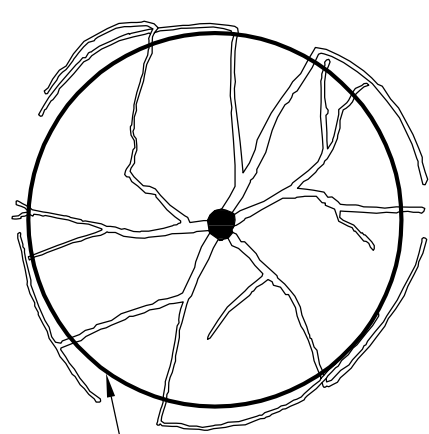
3/8" = 1'-0"

P-CO-BRL-12

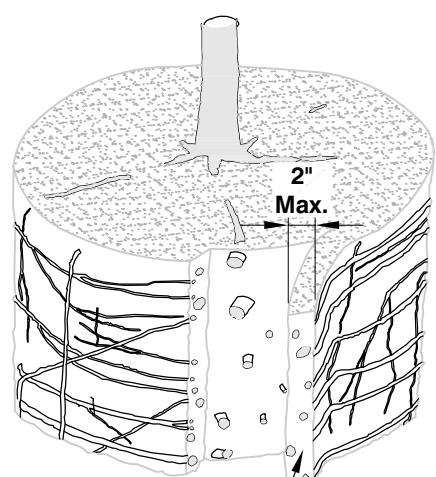
BEFORE SHAVING

SHAVING PROCESS

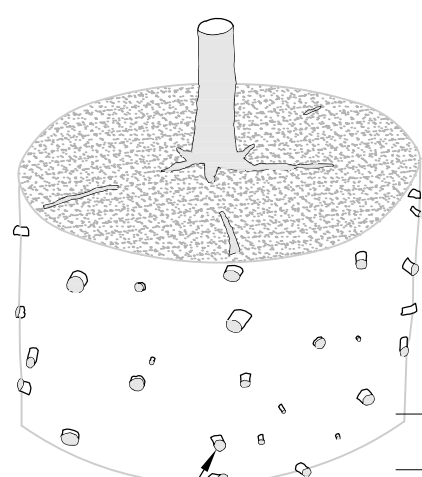
SHAVING COMPLETE



Shave root ball here to remove all roots growing on periphery.



Shave outer periphery of the root ball a maximum of 2" thick.



Root tips exposed at periphery of root ball. All roots growing around periphery are removed.

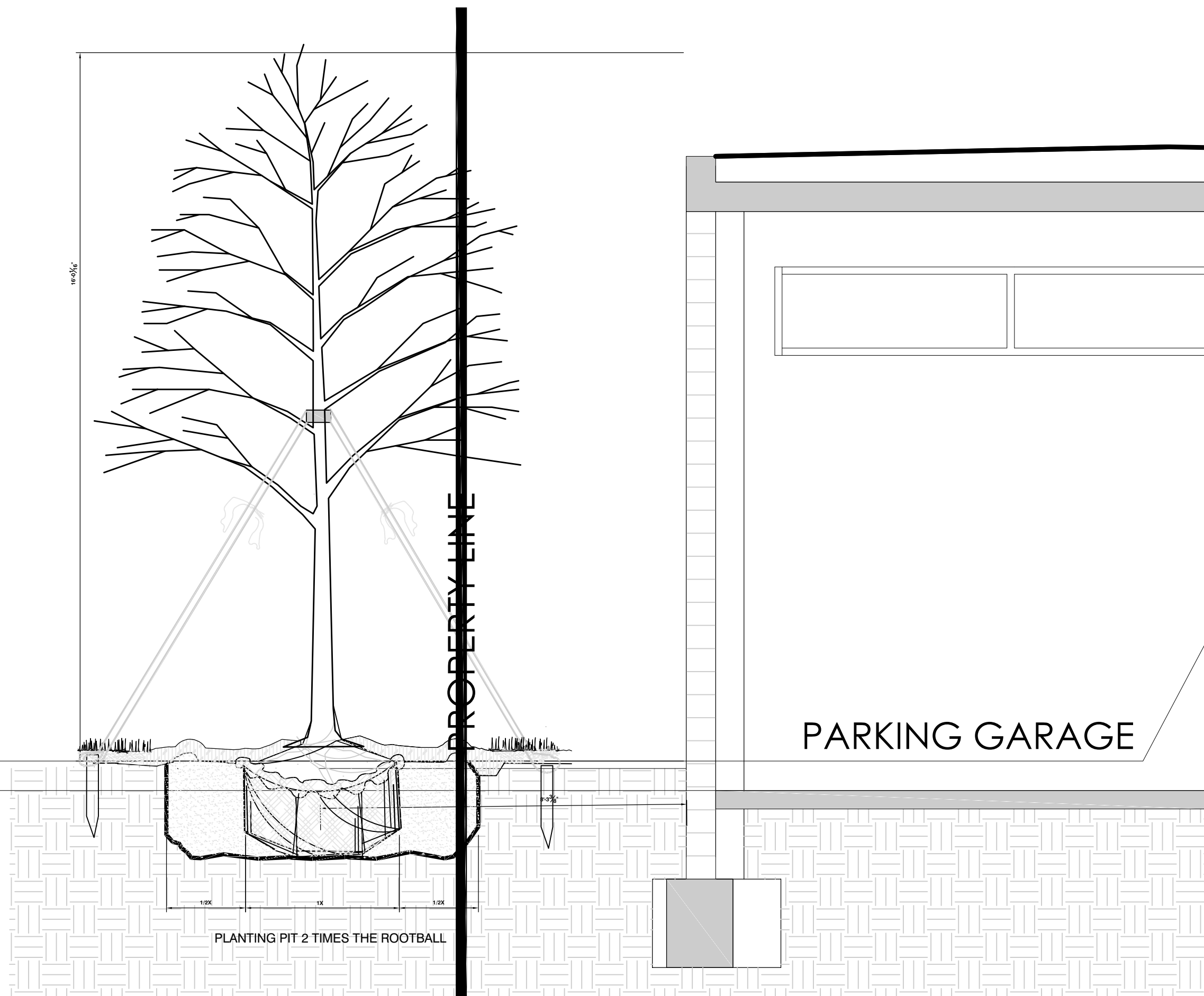
Notes:  
1- Shaving to be conducted using a sharp blade or hand saw eliminating no more than needed to remove all roots on the periphery of root ball.  
2- Shaving can be performed just prior to planting or after placing in the hole.

1 ROOT BALL SHAVING CONTAINER DETAIL

3" = 1'-0"

URBAN TREE FOUNDATION© 2014  
OPEN SOURCE FREE TO USE

FX-PL-FX-CORR-01



2 TREE-FOOTER

1" = 1'-0"

DETAIL-FILE

FIRST LEVEL  
0'-0" (+13.0' N.A.V.D.)

FINISHED GRADE IN GARAGE  
-0'-8" (+12.33' N.A.V.D.)

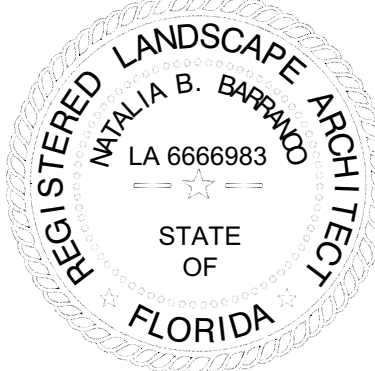
REVISIONS

DATE: 1/24/2024  
COMM: 22019

580 BRINY AVE.

580 BRINY AVE.  
POMPANO BEACH, FL

Natalia Barranco  
c=US, st=Florida, l=Fort lauderdale,  
o=Barranco rla inc., cn=Natalia  
Barranco, email=natalia@b-rla.com  
2024.04.07 20:52:57 -04'00'



REGISTERED LANDSCAPE ARCHITECT  
NATALIA B. BARRANCO  
LA 6666983  
STATE OF FLORIDA  
L-3.1

PZ24-12000003  
05/15/2024